

# An-flex Hose



**Thermoplastic & PTFE**

**Hydraulic**



## HYDRAULIC HOSE

SAE 100R1AT DIN EN 853-1SN	01
SAE 100R2AT DIN EN 853-2SN	01
SAE 100 R17	02
DIN EN 857-2SC	02
EXTRA PRESSURE HYDRAULIC HOSE EXCEED EN 853-2SN	03
HYDRAULIC JACK HOSE	03
SAE 100R5 DIN EN 854-R5	04
DIN EN 854-2TE	04
SAE 100R6 DIN EN 854-R6	05
SAE 100R3 DIN EN 854-R3	05
DIN EN 856-4SP	06
DIN EN 856-4SH	06
SAE 100R12	07
SAE 100R13	07
SAE 100R15	08
SAE 100R5 HI-TEMP HOSE	08
SAE 100R1AT DIN EN 853-1SN HI-TEMP HOSE	09
SAE 100R2AT DIN EN 853-2SN HI-TEMP HOSE	09

## THERMOPLASTIC & TEFLON HOSE

THERMOPLASTIC HOSE SERIES TP7	11
THERMOPLASTIC HOSE SERIES TP8	11
1WTP THERMOPLASTIC HYDRAULIC HOSE	12
2WTP THERMOPLASTIC HYDRAULIC HOSE	12
SEWER JETTING HOSE SERIES SJC7	13
SEWER JETTING HOSE SERIES SJC8	13
AIRLESS SPARY PAINT HOSE SERIES PH1	14
AIRLESS SPARY PAINT HOSE SERIES PPH	14
HIGH PRESSURE JACK HOSE TPJH	15
HIGH PRESSURE JACK HOSE TUJH	15
THERMOPLASTIC HOSE SERIES TEST8	15
PTFE FLEXIBLE HOSES STAINLESS STEEL AISI 304	16
CONVOLUTED PTFE HOSES STAINLESS STEEL AISI 304	16



# Hydraulic Hose



## SAE 100R1AT DIN EN 853-1SN



**1SN DIN EN 853  
SAE 100 R1AT**

Hose Size			I.D.	O.D.	Working Pressure		Minimum Burst Pressure		Minimum Bend Radius	Weight (Approx.)
DN	inch	dash	mm	mm	bar	psi	bar	psi	mm	kg/m
5	3/16	-3	4.8	11.8	250	3625	1000	14500	90	0.190
6	1/4	-4	6.4	13.4	225	3265	900	13060	100	0.230
8	5/16	-5	7.9	15.0	215	3120	850	12480	115	0.270
10	3/8	-6	9.5	17.4	180	2610	720	10440	130	0.345
12	1/2	-8	12.7	20.6	160	2320	640	9280	180	0.425
16	5/8	-10	15.9	23.7	130	1885	520	7540	200	0.510
19	3/4	-12	19.0	27.7	105	1525	420	6100	240	0.645
25	1	-16	25.4	35.6	88	1276	350	5104	300	0.945
31	1.1/4	-20	31.8	43.5	63	914	250	3656	420	1.295
38	1.1/2	-24	38.1	50.6	50	725	200	2900	500	1.590
51	2	-32	50.8	64.0	40	580	160	2320	630	2.120
64	2.1/2	-40	63.5	79.5	25	362	100	1450	762	2.570
76	3	-48	76.2	94.4	20	290	80	1160	915	2.745

- Low, medium pressure hose for hydraulic applications.
- Suitable for passage of mineral and vegetable oils, aqueous emulsions, water, air and inert gases.
- Working Temperature from -40 °C to +100 °C and up to +125 °C for short period.
- Cover: black, synthetic rubber resistant to oils, abrasion and weather conditions.
- Reinforcement: one high tensile steel braids.
- Tube: Synthetic rubber resistant to oils.

## SAE 100R2AT DIN EN 853-2SN

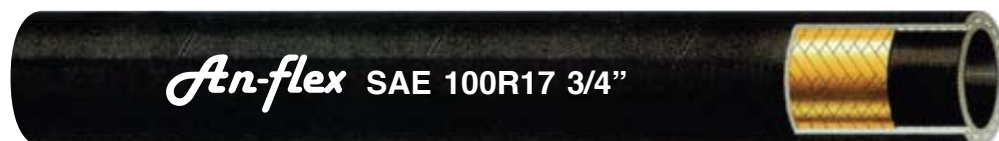


**2SN DIN EN 853  
SAE 100 R2AT**

Hose Size			I.D.	O.D.	Working Pressure		Minimum Burst Pressure		Minimum Bend Radius	Weight (Approx.)
DN	inch	dash	mm	mm	bar	psi	bar	psi	mm	kg/m
5	3/16	-3	4.8	13.4	415	6000	1650	24000	90	0.310
6	1/4	-4	6.4	15.0	400	5800	1600	23200	100	0.385
8	5/16	-5	7.9	16.6	350	5075	1400	20300	115	0.450
10	3/8	-6	9.5	19.0	330	4800	1320	19200	130	0.555
12	1/2	-8	12.7	22.2	275	4000	1100	16000	180	0.660
16	5/8	-10	15.9	25.4	250	3625	1000	14500	200	0.795
19	3/4	-12	19.0	29.3	215	3100	850	12400	240	0.955
25	1	-16	25.4	38.1	165	2400	650	9600	300	1.370
31	1.1/4	-20	31.8	48.3	125	1800	500	7200	420	2.025
38	1.1/2	-24	38.1	54.6	90	1300	360	5200	500	2.750
51	2	-32	50.8	67.3	80	1160	320	4640	630	3.480
64	2.1/2	-40	63.5	82.5	69	1000	276	4000	762	3.790
76	3	-48	76.2	96.0	45	650	179	2600	915	4.010

- Medium and high pressure hose for hydraulic applications.
- Suitable for passage of mineral and vegetable oils, aqueous emulsions, water, air and inert gases.
- Working Temperature from -40 °C to +100 °C and up to +125 °C for short period.
- Cover: black, synthetic rubber resistant to oils, abrasion and weather conditions.
- Reinforcement: two high tensile steel braids.
- Tube: Synthetic rubber resistant to oils.

SAE 100 R17

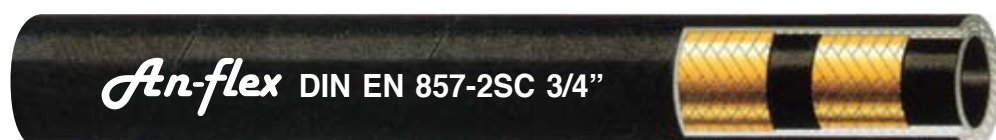


SAE 100 R17

Hose Size			I.D.	O.D.	Working Pressure		Minimum Burst Pressure		Minimum Bend Radius	Weight (Approx.)
DN	inch	dash	mm	mm	bar	psi	bar	psi	mm	kg/m
6	1/4	-4	6.4	12.0	210	3045	840	12180	50	0.170
8	5/16	-5	7.9	13.6	210	3045	840	12180	55	0.220
10	3/8	-6	9.5	15.5	210	3045	840	12180	65	0.280
12	1/2	-8	12.7	20.3	210	3045	840	12180	90	0.390
16	5/8	-10	15.9	23.9	210	3045	840	12180	105	0.530
19	3/4	-12	19.0	27.7	210	3045	840	12180	125	0.750
25	1	-16	25.4	35.4	210	3045	840	12180	150	1.140

- Constant pressure hose for hydraulic applications.
- Suitable for passage of mineral and vegetable oils, aqueous emulsions, water, air and inert gases.
- Working Temperature from -40 °C to +100 °C and up to +125 °C for short period.
- Cover: black, synthetic rubber resistant to oils, abrasion and weather conditions.
- Reinforcement: one high tensile steel braid.
- Tube: Synthetic rubber resistant to oils.

DIN EN 857-2SC



DIN EN 857-2SC

Hose Size			I.D.	O.D.	Working Pressure		Minimum Burst Pressure		Minimum Bend Radius	Weight (Approx.)
DN	inch	dash	mm	mm	bar	psi	bar	psi	mm	kg/m
6	1/4	-4	6.4	13.5	420	6100	1680	24400	45	0.295
8	5/16	-5	7.9	15.0	380	5500	1520	22100	55	0.335
10	3/8	-6	9.5	17.2	350	5100	1400	20300	65	0.420
12	1/2	-8	12.7	20.8	310	4500	1240	18000	80	0.520
16	5/8	-10	15.9	24.0	280	4100	1120	16200	90	0.675
19	3/4	-12	19.0	27.7	240	3500	960	13900	120	0.800
25	1	-16	25.4	35.1	185	2700	740	10700	160	1.150
31	1.1/4	-20	31.8	43.6	165	2400	660	9600	250	1.660
38	1.1/2	-24	38.0	50.5	135	1960	540	7850	300	2.120

- Medium and high pressure hose, extremely flexible for hydraulic applications usable with a reduced bend radius.
- Suitable for passage of mineral and vegetable oils, aqueous emulsions, water, air and inert gases.
- Working Temperature from -40 °C to +100 °C and up to +125 °C for short period.
- Cover: black, synthetic rubber resistant to oils, abrasion and weather conditions.
- Reinforcement: two high tensile steel braids.
- Tube: Synthetic rubber resistant to oils.

## EXTRA PRESSURE HYDRAULIC HOSE EXCEED EN 853-2SN



**AF2XP Hose  
exceed  
DIN EN 853-2SN**

Hose Size			I.D.	O.D.	Working Pressure		Minimum Burst Pressure		Minimum Bend Radius	Weight (Approx.)
DN	inch	dash	mm	mm	bar	psi	bar	psi	mm	kg/m
10	3/8	-6	9.5	19.0	570	8265	1600	23200	130	0.555
12	1/2	-8	12.7	22.2	500	7250	1400	20300	180	0.700
16	5/8	-10	15.9	25.4	428	6206	1200	17400	200	0.840
19	3/4	-12	19.0	29.3	400	5800	1120	16240	240	1.080
25	1	-16	25.4	38.1	320	4640	900	13040	300	1.520
31	1.1/4	-20	31.8	48.3	228	3306	640	9280	420	2.190

- Extra high pressure hose for hydraulic applications.
- Suitable for passage of mineral and vegetable oils, aqueous emulsions, water, air and inert gases.
- Working Temperature from -40 °C to +100 °C and up to +125 °C for short period.
- Cover: black, synthetic rubber resistant to oils, abrasion and weather conditions.
- Reinforcement: two high tensile steel braids.
- Tube: Synthetic rubber resistant to oils.

## HYDRAULIC JACK HOSE



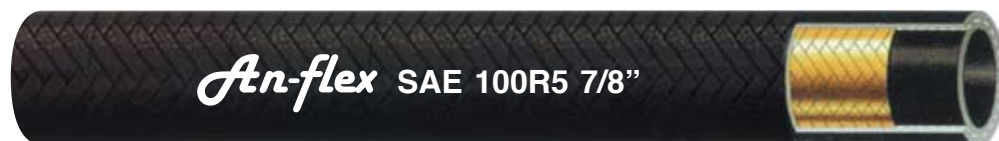
**AFJH JACK HOSE**

Hose Size			I.D.	O.D.	Working Pressure		Minimum Burst Pressure		Minimum Bend Radius	Weight (Approx.)
DN	inch	dash	mm	mm	bar	psi	bar	psi	mm	kg/m
6	1/4	-4	6.4	15.0	700	10000	1750	25000	100	0.385
8	3/8	-6	9.5	19.0	700	10000	1750	25000	130	0.555

- Constant pressure hose for hydraulic jack applications.
- Suitable for passage of mineral and vegetable oils, aqueous emulsions, water, air and inert gases.
- Working Temperature from -40 °C to +100 °C and up to +125 °C for short period.
- Safety Factor - 1:2.5
- Cover: black, synthetic rubber resistant to oils, abrasion and weather conditions.
- Reinforcement: two high tensile steel braids.
- Tube: Synthetic rubber resistant to oils.



SAE 100R5 DIN EN 854-R5



SAE 100R5

Hose Size			I.D.	O.D.	Working Pressure		Minimum Burst Pressure		Minimum Bend Radius	Weight (Approx.)
DN	inch	dash	mm	mm	bar	psi	bar	psi	mm	kg/m
5	3/16	-4	4.8	13.2	210	3000	840	12180	76	0.263
6	1/4	-5	6.4	14.8	210	3000	840	12180	86	0.296
8	5/16	-6	7.9	17.2	157	2270	630	9130	102	0.363
10	13/32	-8	10.3	19.5	140	2030	560	8120	117	0.408
12	1/2	-10	12.7	23.4	122	1760	490	7100	140	0.567
16	5/8	-12	15.9	27.4	105	1520	420	6090	165	0.698
22	7/8	-16	22.2	31.4	56	810	224	3250	187	0.741
28	1.1/8	-20	28.6	38.1	43	625	175	2530	229	0.975
35	1.3/8	-24	34.9	44.3	35	500	140	2030	265	1.020
46	1.13/16	-32	46.0	56.0	24	350	98	1420	335	1.430
60	2.3/8	-40	60.3	73.2	24	350	96	1400	610	2.305

- Low pressure hose for hydraulic applications.
- Suitable for passage of mineral and vegetable oils, aqueous emulsions, water, air and inert gases.
- Working Temperature from -40 °C to +100 °C and up to +125 °C for short period.
- Cover: one black polyester textile braid.
- Reinforcement: one textile braid one high tensile steel braid.
- Tube: Synthetic rubber resistant to oils.

DIN EN 854-2TE



DIN EN 854-2TE

Hose Size			I.D.	O.D.	Working Pressure		Minimum Burst Pressure		Minimum Bend Radius	Weight (Approx.)
DN	inch	dash	mm	mm	bar	psi	bar	psi	mm	kg/m
5	3/16	-3	4.8	11.8	80	1160	320	4640	25	0.120
6	1/4	-4	6.4	13.4	75	1100	300	4400	40	0.150
8	5/16	-5	7.9	15.0	68	1000	272	4000	50	0.160
10	3/8	-6	9.5	16.5	63	920	252	3680	60	0.180
12	1/2	-8	12.7	19.8	58	840	232	3360	70	0.240
16	5/8	-10	15.9	24.0	50	725	200	2900	90	0.320
19	3/4	-12	19.0	27.0	45	650	180	2600	110	0.400
25	1	-16	25.4	34.0	40	580	160	2320	130	0.580
31	1.1/4	-20	31.8	42.0	35	500	140	2000	150	0.750

- Medium pressure hose for hydraulic applications.
- Suitable for passage of mineral and vegetable oils, aqueous emulsions, water, air and inert gases.
- Working Temperature from -40 °C to +100 °C and up to +125 °C for short period.
- Cover: black, synthetic rubber resistant to oils, abrasion and weather conditions.
- Reinforcement: one high resistant tensile braid.
- Tube: Synthetic rubber resistant to oils.

## SAE 100R6 DIN EN 854-R6



**EN 854-R6  
SAE 100R6**

Hose Size			I.D.	O.D.	Working Pressure		Minimum Burst Pressure		Minimum Bend Radius	Weight (Approx.)
DN	inch	dash	mm	mm	bar	psi	bar	psi	mm	kg/m
5	3/16	-3	4.8	11.1	35	510	140	2040	50	0.090
6	1/4	-4	6.4	12.7	30	435	120	1740	65	0.120
8	5/16	-5	7.9	14.3	30	435	120	1740	80	0.135
10	3/8	-6	9.5	15.9	30	435	120	1740	80	0.165
12	1/2	-8	12.7	19.8	30	435	120	1740	100	0.230
16	5/8	-10	15.9	23.0	25	360	100	1440	125	0.290
19	3/4	-12	19.0	26.5	21	300	84	1200	150	0.400
25	1	-16	25.4	34.5	21	300	84	1200	170	0.539

- Inner tube oil resistance synthetic rubber.
- One textile braid reinforcement.
- Cover abrasion and weather resistant synthetic rubber.
- Temperature resistant from -40 °C to +100 °C and up to +125 °C for short periods.
- Used to transport mineral oil based hydraulic oil, oil and water emulsions and aqueous glycol solutions.

## SAE 100R3 DIN EN 854-R3



**EN 854-R3  
SAE 100R3**

Hose Size			I.D.	O.D.	Working Pressure		Minimum Burst Pressure		Minimum Bend Radius	Weight (Approx.)
DN	inch	dash	mm	mm	bar	psi	bar	psi	mm	kg/m
6	1/4	-4	6.4	14.3	86	1247	344	4988	80	0.160
8	5/16	-5	7.9	17.5	83	1204	332	4816	100	0.250
10	3/8	-6	9.5	19.1	78	1131	312	4524	125	0.280
12	1/2	-8	12.7	23.8	69	1001	276	4004	125	0.410
16	5/8	-10	15.9	27.0	60	870	240	3480	140	0.470
19	3/4	-12	19.0	31.8	52	754	208	3016	150	0.650
25	1	-16	25.4	38.1	39	566	156	2264	205	0.780
31	1.1/4	-20	31.8	44.5	26	377	104	1508	255	0.990

- Inner tube oil resistance synthetic rubber.
- Two textile braid reinforcement.
- Cover abrasion and weather resistant synthetic rubber.
- Temperature resistant from -40 °C to +100 °C and up to +125 °C for short periods.
- Used to transport mineral oil based hydraulic oil, oil and water emulsions and aqueous glycol solutions.



**DIN EN 856-4SP**

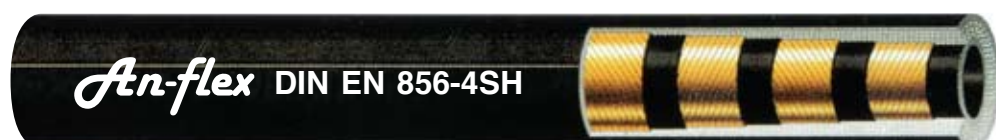


**DIN EN 856-4SP**

Hose Size			I.D.	O.D.	Working Pressure		Minimum Burst Pressure		Minimum Bend Radius	Weight (Approx.)
DN	inch	dash	mm	mm	bar	psi	bar	psi	mm	kg/m
6	1/4	-4	6.4	17.9	500	7250	2000	29000	150	0.630
10	3/8	-6	9.5	21.4	460	6670	1840	26680	180	0.780
12	1/2	-8	12.7	24.6	425	6160	1700	24640	230	0.930
16	5/8	-10	15.9	28.2	400	5800	1600	23200	250	1.130
19	3/4	-12	19.0	32.2	380	5510	1520	22040	300	1.530
25	1	-16	25.4	39.7	320	4640	1280	18560	340	2.060
31	1.1/4	-20	31.8	50.8	210	3040	840	12160	460	3.290
38	1.1/2	-24	38.1	57.2	185	2680	740	10720	560	3.680
51	2	-32	50.8	69.8	175	2530	700	10120	660	5.170

- Pulsing pressure hose with extremely good performances for hydraulic applications.
- Suitable for passage of mineral and vegetable oils, aqueous emulsions, water, air and inert gases.
- Working Temperature from -40 °C to +100 °C and up to +125 °C for short period.
- Cover: black, synthetic rubber resistant to oils, abrasion and weather conditions.
- Reinforcement: four high tensile steel spirals.
- Tube: Synthetic rubber resistant to oils.

**DIN EN 856-4SH**



**DIN EN 856-4SH**

Hose Size			I.D.	O.D.	Working Pressure		Minimum Burst Pressure		Minimum Bend Radius	Weight (Approx.)
DN	inch	dash	mm	mm	bar	psi	bar	psi	mm	kg/m
19	3/4	-12	19.0	32.2	420	6090	1680	24360	280	1.530
25	1	-16	25.4	38.7	385	5580	1540	22320	340	2.120
31	1.1/4	-20	31.8	45.5	350	5070	1400	20280	460	2.580
38	1.1/2	-24	38.1	53.5	300	4350	1200	17400	560	3.460
51	2	-32	50.8	68.1	250	3620	1000	14480	700	4.920

- Pulsing pressure hose with extremely good performances for hydraulic applications.
- Suitable for passage of mineral and vegetable oils, aqueous emulsions, water, air and inert gases.
- Working Temperature from -40 °C to +100 °C and up to +125 °C for short period.
- Cover: black, synthetic rubber resistant to oils, abrasion and weather conditions.
- Reinforcement: four high tensile steel spirals.
- Tube: Synthetic rubber resistant to oils.

## SAE 100R12

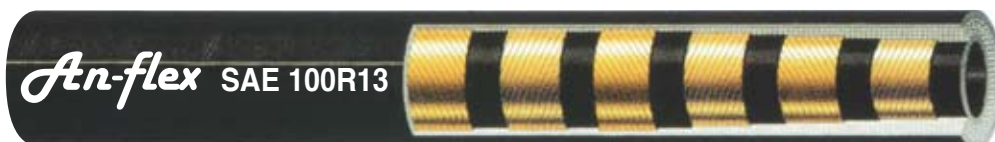


**SAE 100R12**

Hose Size			I.D.	O.D.	Working Pressure		Minimum Burst Pressure		Minimum Bend Radius	Weight (Approx.)
DN	inch	dash	mm	mm	bar	psi	bar	psi	mm	kg/m
10	3/8	-6	9.5	20.0	280	4060	1103	16000	127	0.630
12	1/2	-8	12.7	23.8	280	4060	1103	16000	178	0.775
20	3/4	-12	19.0	30.7	280	4060	1103	16000	241	1.185
25	1	-16	25.4	38.0	280	4060	1103	16000	305	1.720
32	1.1/4	-20	31.8	47.0	210	3045	827	12000	419	2.295
40	1.1/2	-24	38.1	53.5	175	2540	690	10000	508	3.185
50	2	-32	50.8	66.7	175	2540	690	10000	635	4.465

- High pressure hose for hydraulic applications.
- Suitable for passage of mineral and vegetable oils, aqueous emulsions, water, air and inert gases.
- Working Temperature from -40 °C to +100 °C and up to +125 °C for short period.
- Cover: black, synthetic rubber resistant to oils, abrasion and weather conditions.
- Reinforcement: four high tensile steel spirals.
- Tube: Synthetic rubber resistant to oils.

## SAE 100R13

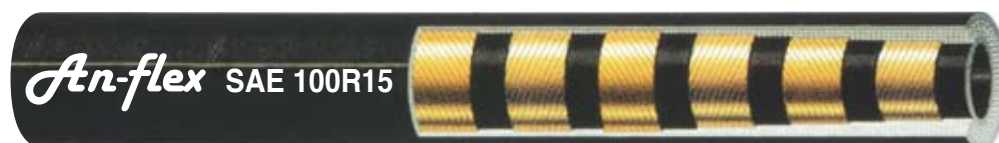


**SAE 100R13**

Hose Size			I.D.	O.D.	Working Pressure		Minimum Burst Pressure		Minimum Bend Radius	Weight (Approx.)
DN	inch	dash	mm	mm	bar	psi	bar	psi	mm	kg/m
20	3/4	-12	19.0	32.0	350	5075	1379	20000	241	1.655
25	1	-16	25.4	39.1	350	5075	1379	20000	305	2.220
32	1.1/4	-20	31.8	49.8	350	5075	1379	20000	419	3.335
40	1.1/2	-24	38.1	57.3	350	5075	1379	20000	508	4.785
50	2	-32	50.8	71.8	350	5075	1379	20000	635	6.870

- Very high pressure hose for hydraulic applications.
- Suitable for passage of mineral and vegetable oils, aqueous emulsions, water, air and inert gases.
- Working Temperature from -40 °C to +100 °C and up to +125 °C for short period.
- Cover: black, synthetic rubber resistant to oils, abrasion and weather conditions.
- Reinforcement: four high tensile steel spirals up to 1"ø, six spiral for ø1.1/4", 1.1/2" & 2".
- Tube: Synthetic rubber resistant to oils.

**SAE 100R15**



**SAE 100R15**

Hose Size			I.D.	O.D.	Working Pressure		Minimum Burst Pressure		Minimum Bend Radius	Weight (Approx.)
DN	inch	dash	mm	mm	bar	psi	bar	psi	mm	kg/m
19	3/4	-12	19.0	32.0	420	6090	1680	24000	240	1.545
25	1	-16	25.4	38.4	420	6090	1680	24000	300	2.125
32	1.1/4	-20	32.0	49.3	420	6090	1680	24000	415	3.970
38	1.1/2	-24	38.0	57.4	420	6090	1680	24000	500	4.975
51	2	-32	50.8	71.7	420	6090	1680	24000	630	6.700

- Very high pressure hose for hydraulic applications.
- Suitable for passage of mineral and vegetable oils, aqueous emulsions, water, air and inert gases.
- Working Temperature from -40 °C to +100 °C and up to +125 °C for short period.
- Cover: black, synthetic rubber resistant to oils, abrasion and weather conditions.
- Reinforcement: four high tensile steel spirals up to 1"ø, six spiral for ø1.1/4", 1.1/2" & 2".
- Tube: Synthetic rubber resistant to oils.

**SAE 100R5 HI-TEMP HOSE**



**SAE 100R5 HI-TEMP HOSE**

Hose Size			I.D.	O.D.	Working Pressure		Minimum Burst Pressure		Minimum Bend Radius	Weight (Approx.)
DN	inch	dash	mm	mm	bar	psi	bar	psi	mm	kg/m
5	3/16	-4	4.8	12.9	207	3002	828	12006	75	0.260
6	1/4	-5	6.4	14.5	207	3002	828	12006	85	0.300
8	5/16	-6	8	16.8	155	2248	620	8990	100	0.375
10	13/32	-8	10.3	19.1	138	2001	552	8004	115	0.435
12	1/2	-10	12.7	22.9	121	1755	484	7018	140	0.595
16	5/8	-12	16	27.1	103	1494	412	5974	165	0.745
22	7/8	-16	22.2	30.8	55	798	220	3190	185	0.735
28	1.1/8	-20	28.6	37.6	43	624	172	2494	230	0.975
35	1.3/8	-24	34.9	44.5	34	493	136	1972	265	1.210
46	1.13/16	-32	46	56.4	24	348	96	1392	335	1.470
60	2.3/8	-40	60	73	24	348	96	1392	610	2.435

- Inner tube high temperature hydraulic oil resistant special synthetic rubber.
- Synthetic textile and high tensile steel wire braids reinforcement.
- Oil and weather resistant synthetic rubber impregnated cotton braid cover.
- Temperature resistant from -50 °C to +150 °C.
- Used for high pressure hydraulic systems in industry and mining where operating temperatures are up to 150 °C.

## SAE 100R1AT DIN EN 853-1SN HI-TEMP HOSE

*An-flex* SAE 100R1AT 1/2" - EN 853-1SN DN12 HI-TEMP



**EN 853-1SN  
SAE 100R1AT  
HI-TEMP HOSE**

Hose Size			I.D.	O.D.	Working Pressure		Minimum Burst Pressure		Minimum Bend Radius	Weight (Approx.)
DN	inch	dash	mm	mm	bar	psi	bar	psi	mm	kg/m
6	1/4	-4	6.4	13.2	225	3263	900	13050	100	0.240
8	5/16	-5	8	14.8	215	3118	850	12325	115	0.280
10	3/8	-6	9.5	17.2	180	2610	720	10440	130	0.360
12	1/2	-8	12.7	20.4	160	2320	640	9280	180	0.445
16	5/8	-10	16	23.5	130	1885	520	7540	200	0.545
19	3/4	-12	19	27.5	105	1523	420	6090	240	0.635
25	1	-16	25.4	35.4	88	1276	350	5075	300	0.960
31	1.1/4	-20	31.8	43.5	63	914	250	3625	420	1.355
38	1.1/2	-24	38.1	50	50	725	200	2900	500	1.535
51	2	-32	50.8	63.6	40	580	160	2320	630	1.090

- Inner tube high temperature hydraulic oil resistant special synthetic rubber.
- High tensile steel wire braid reinforcement.
- Oil, abrasion and weather resistant synthetic rubber cover.
- Temperature resistant from -40 °C to +150 °C.
- Used for high pressure hydraulic systems in industry and mining where operating temperatures are up to 150 °C.

## SAE 100R2AT DIN EN 853-2SN HI-TEMP HOSE

*An-flex* SAE 100R2AT 1/2" - EN 853-2SN DN12 HI-TEMP



**EN 853-2SN  
SAE 100R2AT  
HI-TEMP HOSE**

Hose Size			I.D.	O.D.	Working Pressure		Minimum Burst Pressure		Minimum Bend Radius	Weight (Approx.)
DN	inch	dash	mm	mm	bar	psi	bar	psi	mm	kg/m
6	1/4	-4	6.4	15	400	5800	1600	23200	100	0.400
8	5/16	-5	8	16.5	350	5075	1400	20300	115	0.465
10	3/8	-6	9.5	18.9	330	4785	1320	19140	130	0.575
12	1/2	-8	12.7	22.2	275	3988	1100	15950	180	0.680
16	5/8	-10	16	25.2	250	3625	1000	14500	205	0.800
19	3/4	-12	19	29.2	215	3118	850	12325	240	0.985
25	1	-16	25.4	37.2	165	2393	650	9425	300	1.380
31	1.1/4	-20	31.8	47.3	125	1813	500	7250	420	2.035
38	1.1/2	-24	38.1	53.7	90	1305	360	5220	500	2.280
51	2	-32	50.8	66.7	78	1131	310	4500	630	2.970

- Inner tube high temperature hydraulic oil resistant special synthetic rubber.
- High tensile 2 steel wire braids reinforcement.
- Oil, abrasion and weather resistant synthetic rubber cover.
- Temperature resistant from -40 °C to +150 °C.
- Used for high pressure hydraulic systems in industry and mining where operating temperatures are up to 150 °C.